



**ventec**  
INTERNATIONAL GROUP  
騰輝電子

# Material Overview: Back-up and Entry Lamination accessories

Benjamin Rittereiser

Version: May, 2022

## Ventec International Group

Wherever technology takes you, we deliver

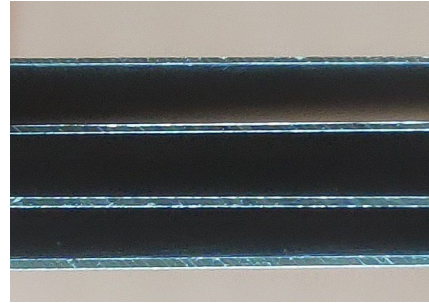


www.ventecclaminates.com

# Drill Entry - CIM-Alu 1001

Drill Entry - CIM-Alu 1001

Thicknesses:  
0,15 mm  
0,18 mm  
0,21 mm  
0,24 mm



Good for drilling fine and micro holes

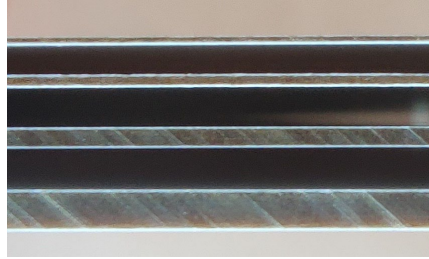
Technical Data	
Temper	H 18 hard
Tensile strength	> 190 Mpa; EN 541
Elongation	> 3 %
Surface roughness	Approx. 3.5 $\mu\text{m}$ $\pm$ 1 $\mu\text{m}$
Warpage	< 1 % of edge length
Thickness tolerance	$\pm$ 0.01 mm



# Drill / Routing Entry - CIMDRILL MPM

Drill / Routing Entry - CIMDRILL MPM

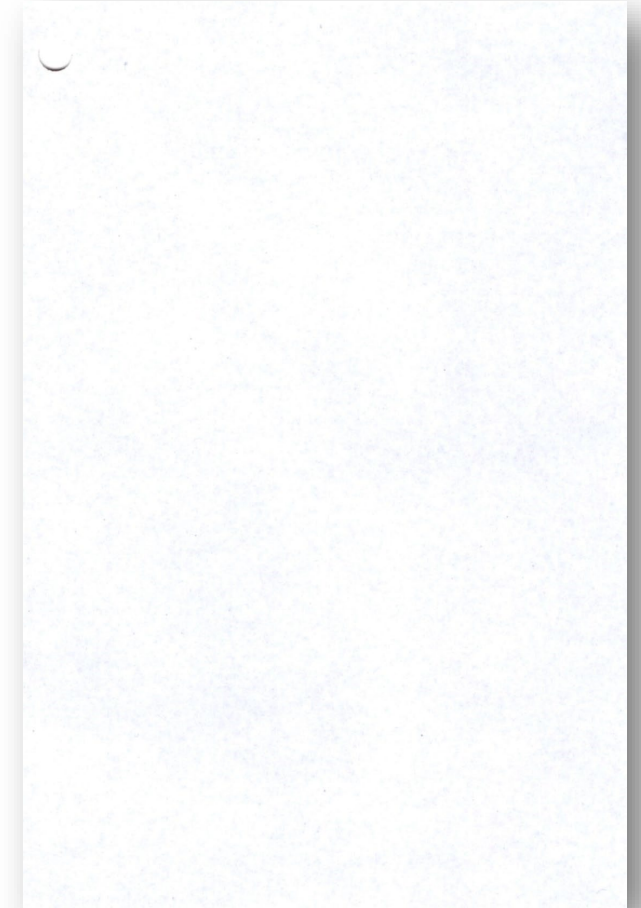
Thicknesses:  
0,30 mm  
0,45 mm  
0,80 mm  
1,50 mm



Good for sensitive and relatively soft materials such as polyimide or PTFE

## Technical Data

Thickness MPM-30	0.30 mm $\pm$ 10 %	Density	approx. $\geq$ 1.3 g/cm <sup>3</sup>
Thickness MPM-45	0.45 mm $\pm$ 10 %	Structure	3-layer compound
Thickness MPM-80	0.80 mm $\pm$ 10 %	Sizes (tolerance: $\pm$ 2 mm)	930 mm x 1235 mm 1080 mm x 1235 mm
Thickness MPM-150	1.50 mm $\pm$ 10 %	Packing	500 sheets/pallet
Hardness	> 80 Shore D	Colour	white, matte

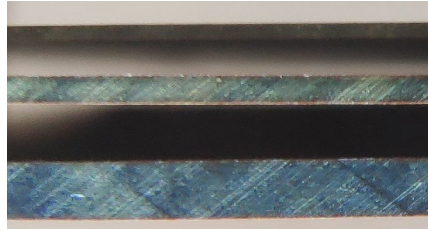




# Drill / Routing Entry - CIMDRILL PH

Drill / Routing Entry - CIMDRILL PH

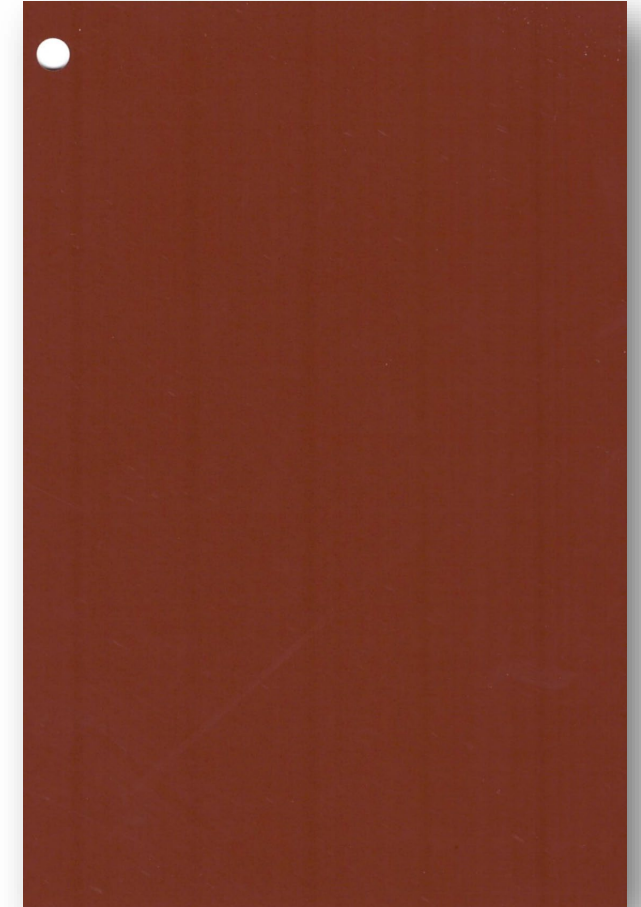
Thicknesses:  
0,40 mm  
0,80 mm  
1,50 mm



Good for sensitive and relatively soft materials such as polyimide or PTFE

## Technical Data

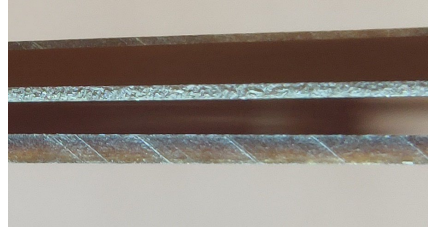
Thickness PH-04	0.40 mm $\pm$ 10 %	Composition	Paper Laminate
Thickness PH-05	0.50 mm $\pm$ 10 %	Sizes (tolerance: $\pm$ 2 mm)	930 mm x 1235 mm 1075 mm x 1235 mm
Thickness PH-08	0.80 mm $\pm$ 10 %	Packing	500 sheets/pallet
Thickness PH-150	1.50 mm $\pm$ 10 %	Colour	brown
Density	approx. $\geq$ 1.3 g/cm <sup>3</sup>		



# Routing Entry - CIMDRILL FA

Routing Entry - CIMDRILL FA

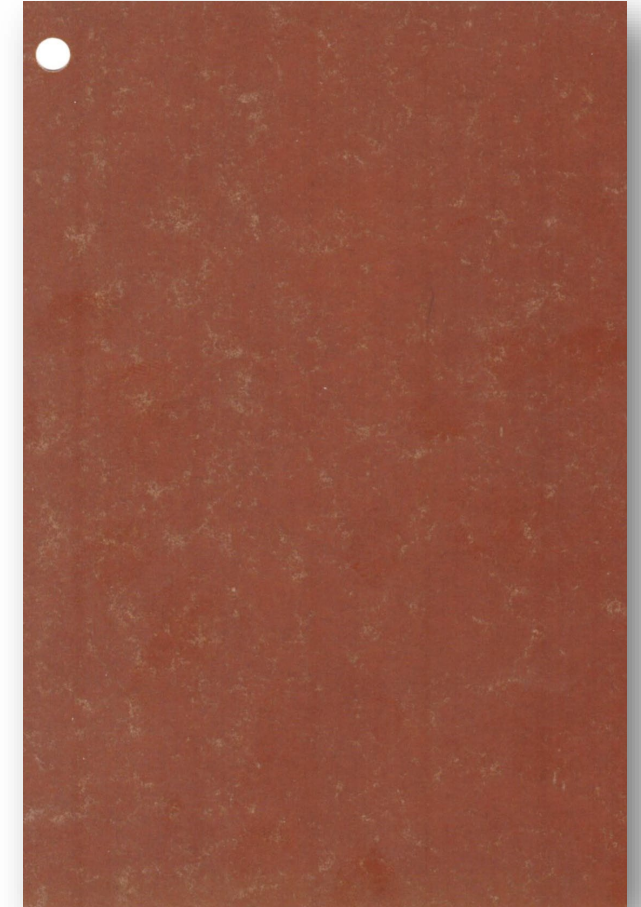
Thicknesses:  
0,20 mm  
0,40 mm  
0,80 mm



Good for combined use as a drilling and milling cover layer,  
especially for hard materials

## Technical Data

Thickness FA-20	0.20 mm $\pm$ 10 %	Structure	3-layer compound
Thickness FA-40	0.40 mm $\pm$ 10 %	Packing	500 sheets/pallet
Thickness FA-80	0.80 mm $\pm$ 10 %	Colour	medium brown, speckled
Sizes (tolerance: $\pm$ 2 mm)		930 mm x 1235 mm 1075 mm x 1235 mm or customers request	
Special Information	Product was developed in cooperation between supplier and Ventec exclusively for Ventec		



# Back-up - CIMDRILL BU-25

Back-up - CIMDRILL BU-25

Thickness: 2,50 mm



Technical Data	
Thickness	2.50 mm
Thickness tolerance	± 0.20 mm
Density	≥ 830 kg/m <sup>3</sup>
Surface hardness	≥ 65 Shore
Bending strength	≥ 23 N/mm <sup>2</sup>
Warpage	< 2 mm/m edge length



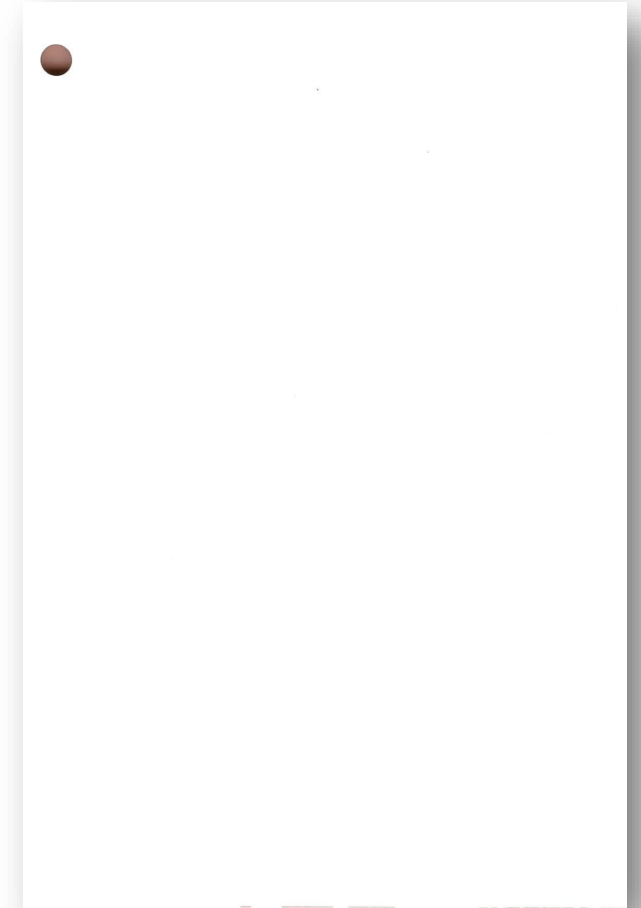
# Back-up - CIMWOOD - Superdrill SD-25

CIMWOOD - Superdrill SD-25

Thickness: 2,50 mm



Technical Data	
Thickness	2.50 mm
Thickness tolerance	-0,10 / + 0.20 mm
Density	≥ 850 kg/m <sup>3</sup>
Surface hardness	≥ 65 Shore
Bending strength	> 40 N/mm <sup>2</sup>



# Back-up - CIMWOOD - Superdrill SD-25-C

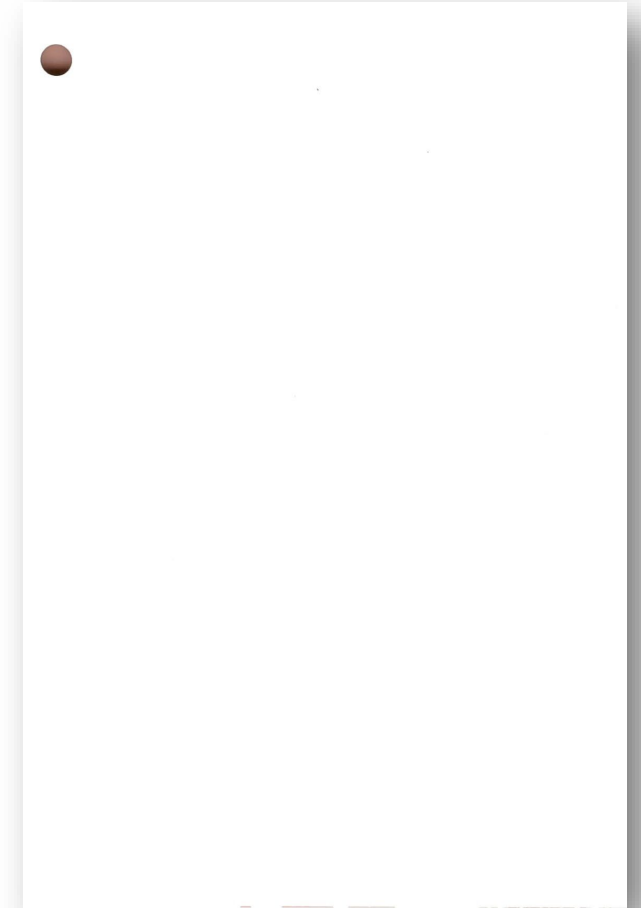
CIMWOOD - Superdrill SD-25-C

Thickness: 2,50 mm



## Technical Data

Thickness	2.50 mm
Thickness tolerance	$\pm 0.20$ mm
Density	$\geq 950$ kg/m <sup>3</sup>
Surface hardness	$\geq 80$ Shore
Warpage	$\leq 0.60$ %





# Back-up - CIMWOOD Superdrill SD-25-HD

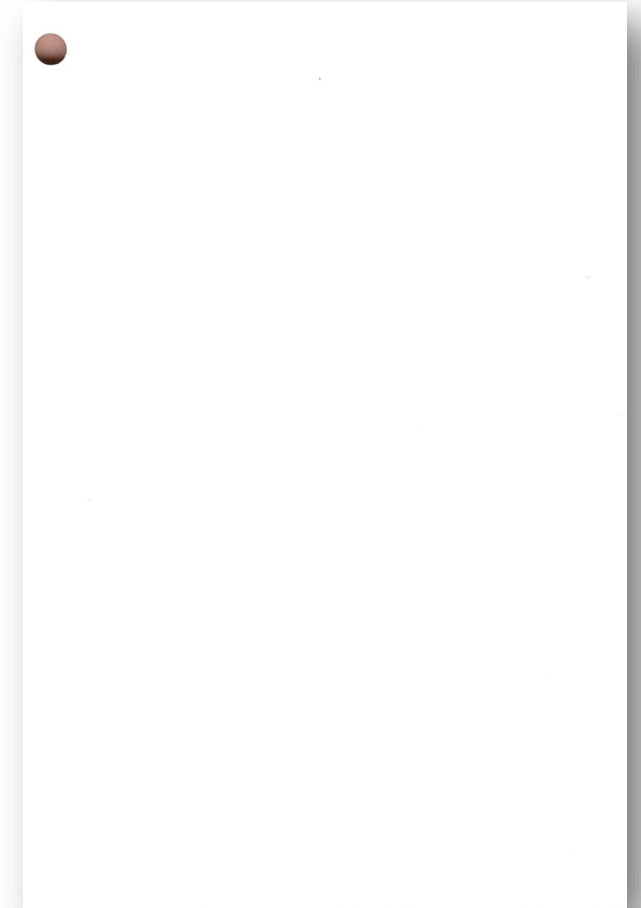
Back-up - CIMWOOD Superdrill SD-25-HD

Thickness: 2,50 mm



## Technical Data

Thickness	2.50 mm
Thickness tolerance	± 0.10 mm
Density	≥ 1000 kg/m <sup>3</sup>
Surface hardness	≥ 85 Shore-D
Flexural strength	> 40 N/mm <sup>2</sup>



# Back-up - CIMWOOD Superdrill SD-2-W

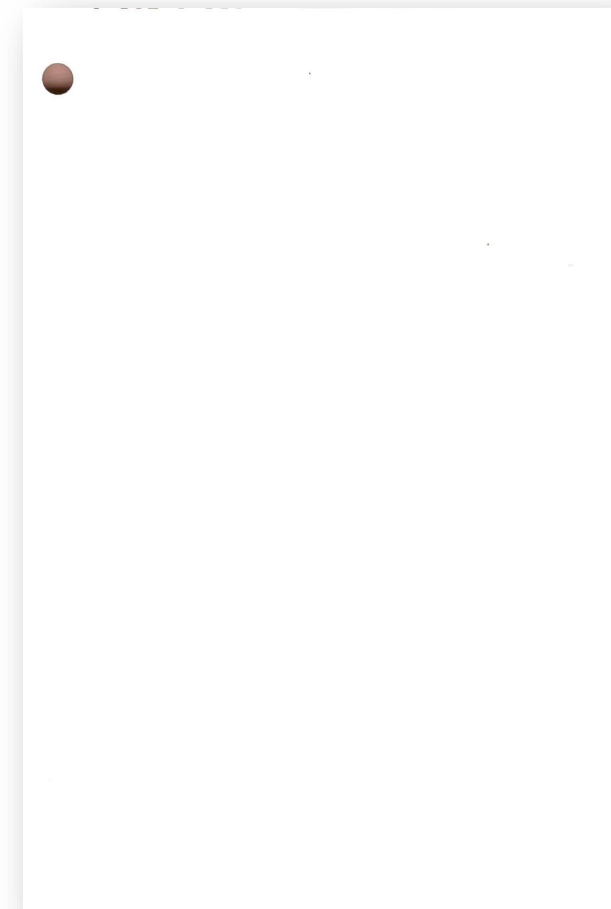
Back-up - CIMWOOD Superdrill SD-2-W

Thickness: 2,00 mm



## Technical Data

Thickness	2.00 mm
Thickness tolerance	± 0.10 mm
Density	≥ 1000 kg/m <sup>3</sup>
Surface hardness	≥ 85 Shore-D
Flexural strength	> 40 N/mm <sup>2</sup>



# Routing Back-up - CIMBLOC HM

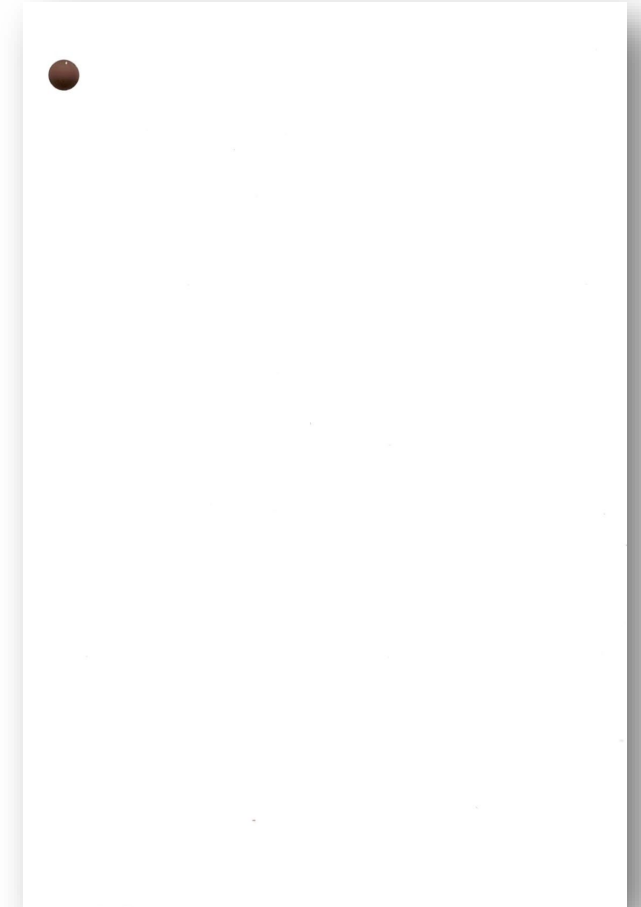
Routing Back-up - CIMBLOC HM

Thicknesses:  
8,00 mm  
  
10,00 mm



## Technical Data

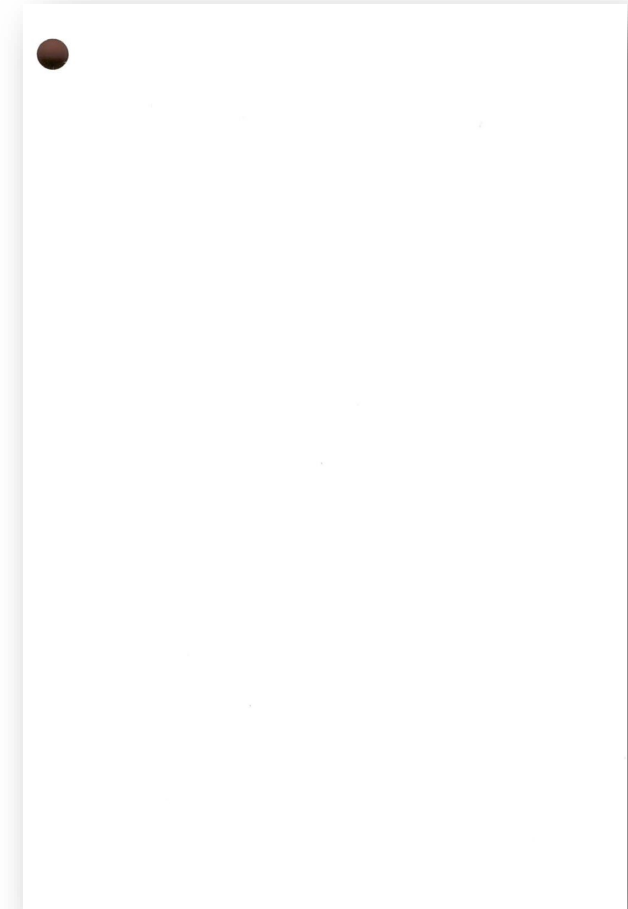
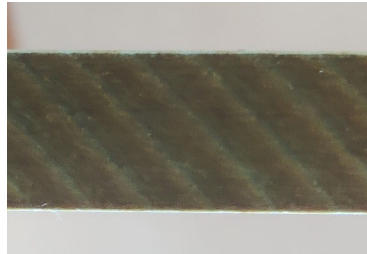
Thickness HM-8	8.00 mm $\pm$ 0.04 mm	Density	$\geq$ 1000 kg/m <sup>3</sup>
Thickness HM-10	10.00 mm $\pm$ 0.04 mm		
Sizes (tolerance: $\pm$ 2 mm)	1400 mm x 1850 mm	Moisture absorption	5 – 8 %
Hardness	> 85 Shore-D		
Bending strength	> 45 N/mm <sup>2</sup>	Colour	white, matte



# Routing Back-up - CIMBLOC SH

Routing Back-up - CIMBLOC SH

Thicknesses:  
8,00 mm



Technical Data			
Thickness SH-6	6.00 mm $\pm$ 5 %	Tensile strength	7.000 MPa
Thickness SH-8	8.00 mm $\pm$ 5 %	Moisture absorption	8%
Sizes	on customers request		
Density	$\geq$ 1400 kg/m <sup>3</sup>	Colour	white, matte



# Release film ACC-3 PTFE

## Release film ACC-3 PTFE

### Technical Data

Thickness	0.025 mm +0,01 / - 0 mm	Material	PTFE
Gloss level	matte	Temperature resistance	approx. 240°C
Roll widths	660mm / 1220mm or on customers request in panels	Colour	translucent milky

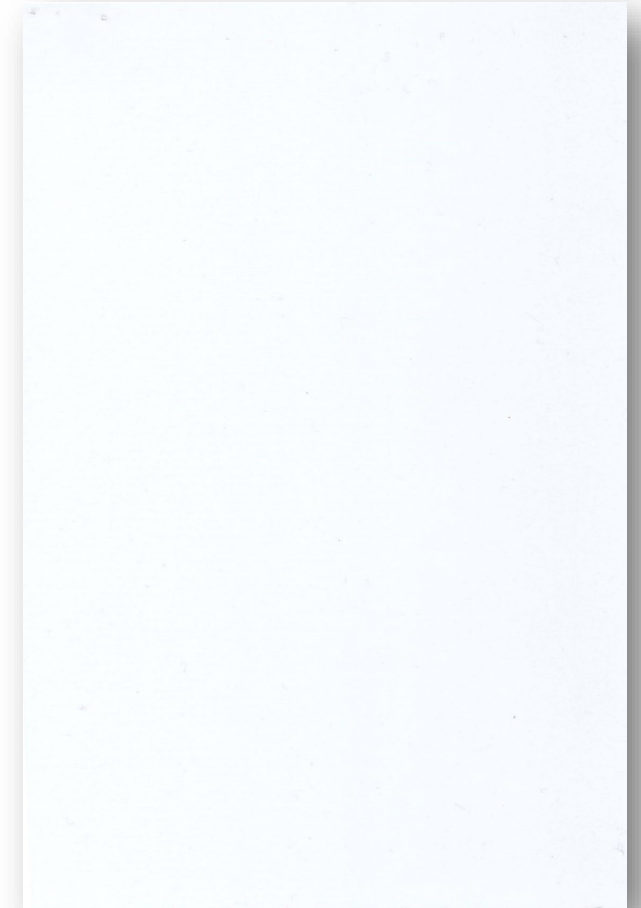


# Release film ACC-8

## Release film ACC-8

### Technical Data

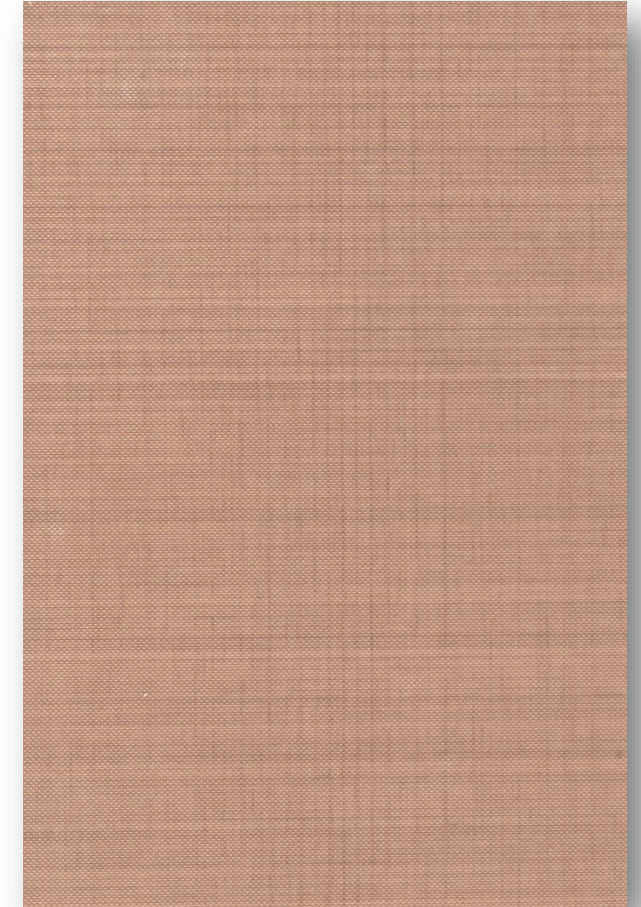
Thickness	30 $\mu\text{m} \pm 0,003 \mu\text{m}$	Temperature resistance	approx. 200°C
Roll widths	600 mm / 660 mm /670 mm or on customers request in panels	Colour	milky white



# Reinforcement fabric ACC-14 (Stiffener)

## Reinforcement fabric ACC-14 (Stiffener)

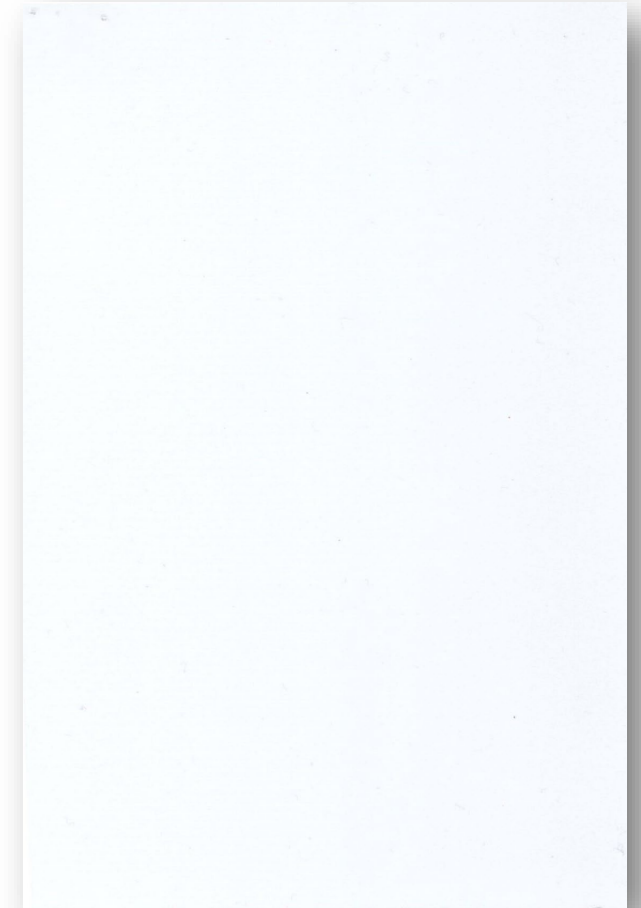
Technical Data			
Thickness	0,13 mm	temperature resistance	approx. 260°C
Roll widths	1300 mm or on customers request in panels	Usability	several times depending on use
Material	PTFE impregnated glass fabric	Colour	light brown



# Pressure compensation film ACC-25

## Pressure compensation film ACC-25

Technical Data	
Thickness	0,30 mm $\pm$ 0,15 mm
Roll widths	650 mm / 1220 mm / 1300 mm or on customers request in panels
Colour	milky white





# Permanent press pad ACC-16-1

## Permanent press pad ACC-16-1

Technical Data			
Thickness	1,60 mm ± 0,13 mm	Temperature resistance	approx. 260°C
Roll widths	965 mm or on customers request in panels	Usability	several times depending on use
Material	Silicon rubber with a glass fabric core	Colour	rusty red



# Copper foil CIMCU

## Copper foil CIMCU

Technical Data	
Thickness	On customers request
Size	On customers request
Treatment	On customers request





**ventec**  
INTERNATIONAL GROUP  
騰輝電子



Thank you.

**Ventec International Group**  
**Benjamin Rittereiser**  
**Technical Sales**  
**benjamin.rittereiser@ventec-europe.com**  
**+49 172 777 93 85**